

**Deputation to NWLDC by Packington Nook Residents' Association**  
**Local Development Framework Consultation**  
**26 February 2009**

This deputation is brought by Packington Nook Residents' Association on behalf of the residents of Ashby de la Zouch and Packington.

In November and December 2008, we surveyed households across Ashby and Packington for views on key questions in the NW Leicestershire Local Development Framework (LDF) consultation. The LDF is the process used by the planning authority to plan housing and industrial development, infrastructure and services towards the year 2026. We are the only organisation who has actively sought the views of local residents in these important questions.

The questions we asked were ones we felt should be asked of all residents – in particular, the possibility of Ashby being targeted for large-scale development.

The results are overwhelmingly conclusive and we had **1456 responses**. Over **95% of households stated they were against large-scale development** and wanted 500 additional homes or less. In the attached results, you will see that, of those against large-scale development, most favoured option 1, which we understand is the council's preferred option.

We asked residents for their choice of the specific sites targeted for development in the town. Bearing in mind the response to the first question about large scale development, most residents preferred a small site. If up to 500 homes is the target, we believe that this can mostly be met by developments already approved for Ashby.

**The Packington Nook site stands out as one most people would strongly object to development.**

**On affordable housing**, most residents felt that a percentage figure of **less than 40%** would be desirable.

**92% of residents opposed** to the concept of **sites for travellers** being associated with new developments.

Residents also showed they had strong concerns about the infrastructure in Ashby – with many agreeing strongly that **health services, roads, public transport and sewage systems were already struggling to cope** with the existing population.

The Packington Nook Residents' Association has also responded to the wider LDF Consultation and that has already been passed – along with the results of this survey – to the Planning Policy and Sustainability Manager of this authority.

---

**We request that the council notes these results and that the appropriate officers and committees of the council take the views of the people of Ashby into consideration, when making important decisions about the future of our town.**

---

## ASHBY LOCAL DEVELOPMENT SURVEY

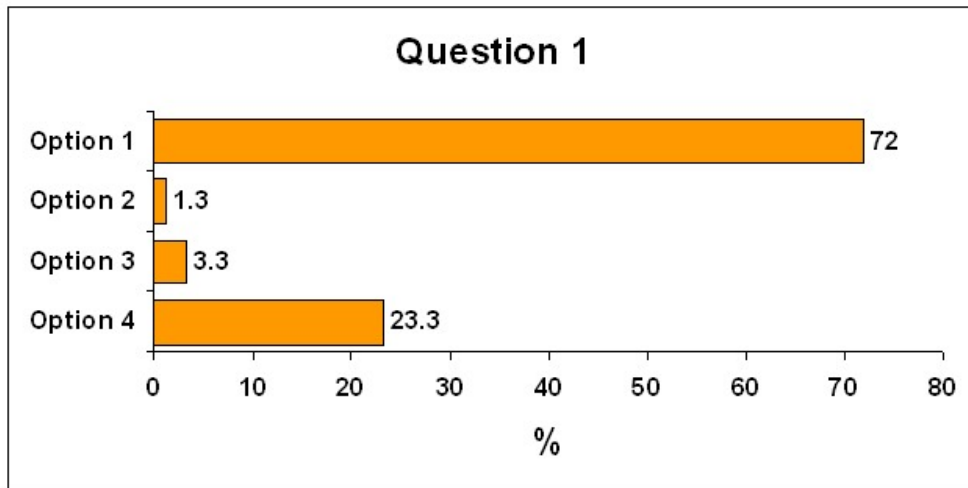
### QUESTION 1: HOUSING CAPACITY

The Council's options on new housing distribution are shown below. Which option do you prefer?

Option	Ashby	Coalville	Castle Donington	Ibstock	Kegworth	Measham
1	<b>500</b>	9800	500	100	50	50
2	<b>2400</b>	8000	350	100	75	75
3	<b>1800</b>	5400	1200	1000	800	800
4	<b>500</b>	7700	1000	1000	400	400

*Note: Option 1 is NWLDC's preferred option*

### Question 1: Results



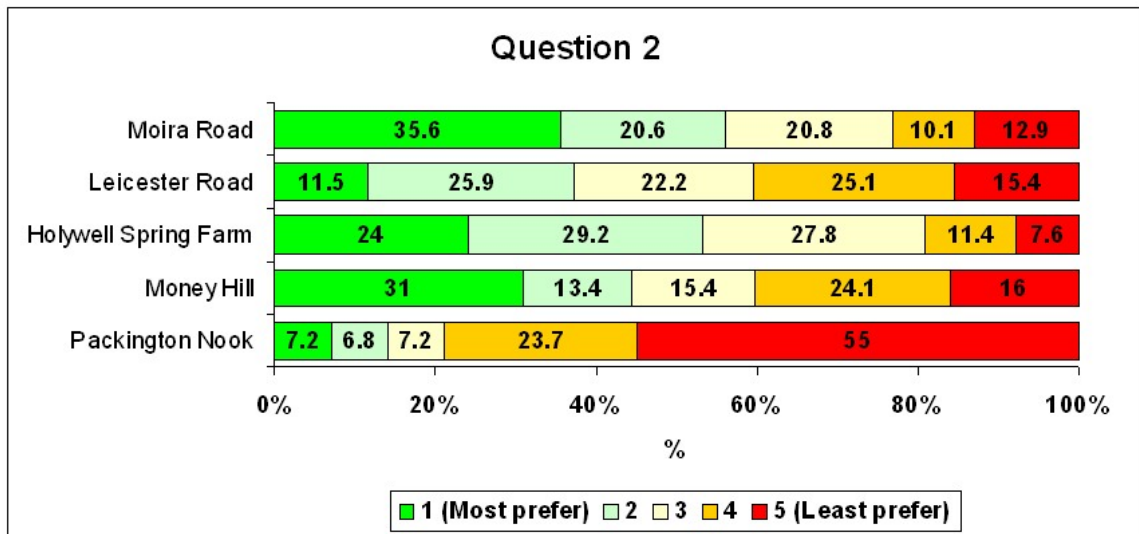
### QUESTION 2: HOUSING DEVELOPMENT IN ASHBY

Bearing in mind your answer to question 1, please order 1-5 the following sites within Ashby you feel should be developed.

Site	Dwelling Capacity
Moira Road	145
Leicester Road	400
Holywell Spring Farm (Burton Road)	500
Money Hill (North of Ashby)	1600
Packington Nook (South of Ashby)	1100

Residents rated 1 is their most preferred, 5 is their least preferred

**Question 2: Results**

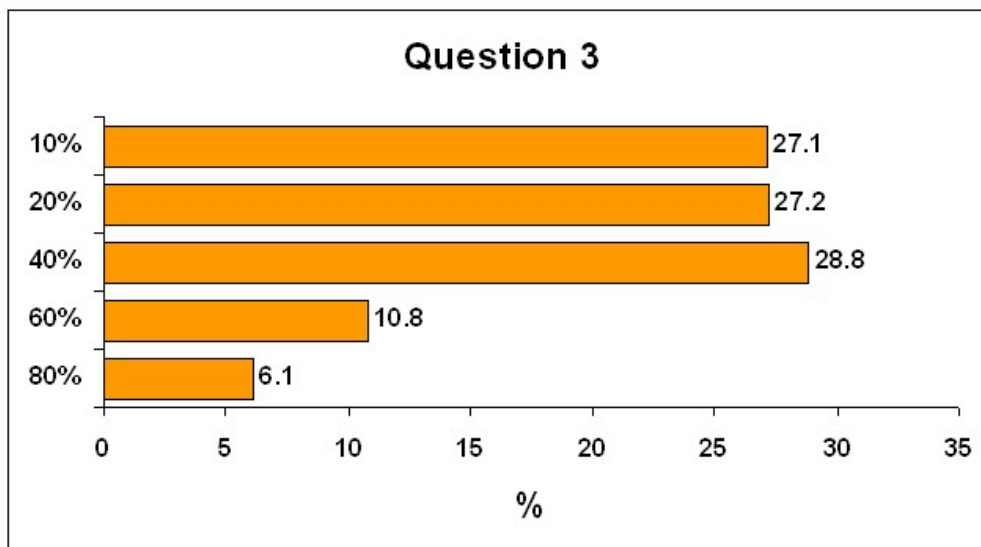


**QUESTION 3: AFFORDABLE HOUSING**

The Council has recommended 40% affordable housing in all new developments for Ashby. What % of affordable housing would you like to see?

- 10%       20%       40%       60%       80%

**Question 3: Results**

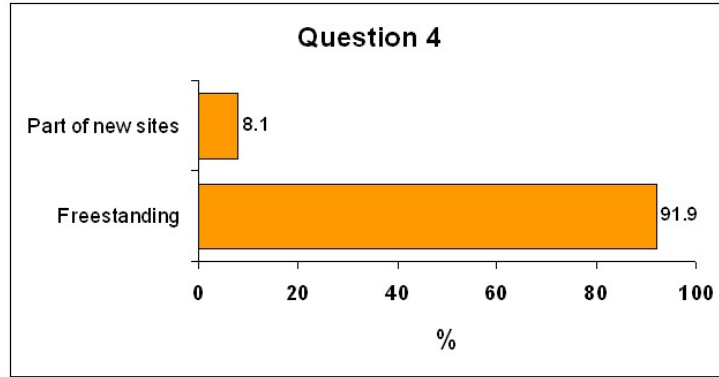


**QUESTION 4: SITES FOR TRAVELLERS**

Where should sites for gypsies and travellers be located?

- As part of identified housing development sites
- On specific free standing sites on the edge of rural towns

**Question 4: Results**



**QUESTION 5: LOCAL INFRASTRUCTURE AND SERVICES**

Which infrastructure most needs expanding in Ashby? Please circle each category

Rank 1-5	Infrastructure	Rank	Infrastructure
1 2 3 4 5	Doctors / Hospital / Dentist	1 2 3 4 5	Public Transport
1 2 3 4 5	Junior Schools	1 2 3 4 5	Community Centre
1 2 3 4 5	High School / Senior School	1 2 3 4 5	Leisure facility/ Parks
1 2 3 4 5	Road System / Car Parks	1 2 3 4 5	Sewage System

*1 is least needed. 5 is most needed*

**Question 5: Results**

